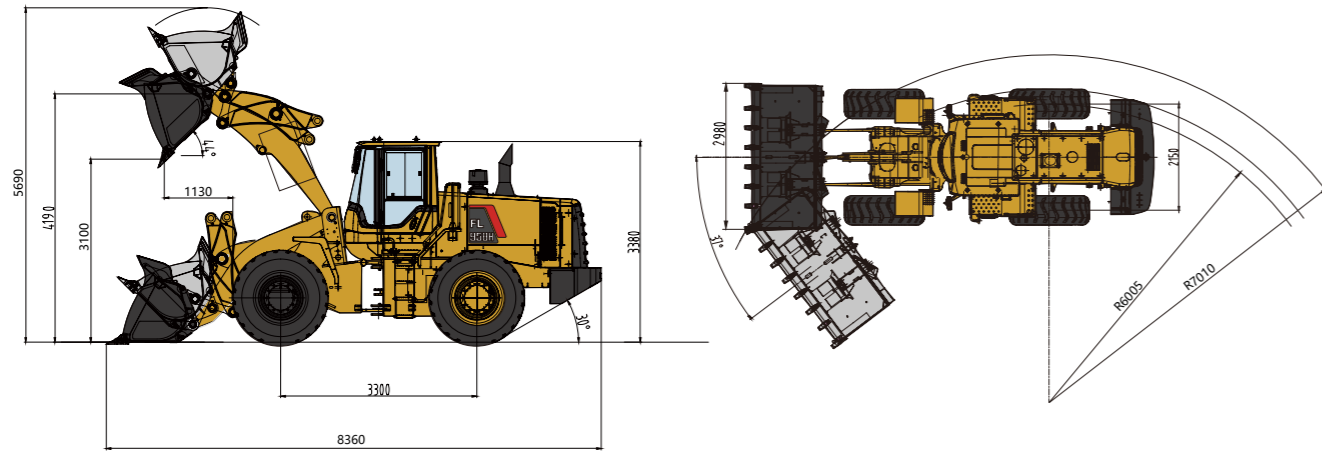


FL958H Wheel Loader Specifications



FL958H Dimensions



| Item | Specifications |
|---------------------------|----------------------|
| Rated Load | 5500kg |
| Max. Traction Force | 155kN |
| Max. Gradeability | 30° |
| Max. Dump Clearance | 3100mm |
| Dump Reach | 1130mm |
| Wheel Tread | 2150mm |
| Wheelbase | 3300mm |
| Overall Dimension (L×W×H) | 8360mm×2980mm×3380mm |

| Engine | |
|--------------------------------|-----------|
| Emission Standard | Stage II |
| Number of Cylinder-Bore/Stroke | 6-126°130 |
| Max. Torque | 860N·m |
| Rated Speed | 2200rpm |
| Displacement | 9.726L |

| Transmission System | |
|----------------------|-----------------------------------------|
| Torque Converter | Single stage single phase three element |
| Modulus of Converter | 2.55 |
| Transmission | Electronical control countershaft |
| Gear Shift | 4 forward, 3 reverse |
| Max. Speed | 38km/h |

| Front and Rear Axles | |
|-----------------------|------------------------------------------|
| Axles Type | Dry axles |
| Final Decelerate Type | Planetary reducer, spur cylindrical gear |

| Tyre | |
|---------------------|--------------|
| Tyre Size | 23.5-25 |
| Ply | 16 |
| Front Tyre Pressure | 0.30-0.32MPa |
| Rear Tyre Pressure | 0.28-0.30MPa |

| Steering System | |
|-------------------------------|-------------------------------|
| Type | Fix&Variable hydraulic system |
| Steering Angle Each Direction | 37° |
| Min. Turning Radius | 7010mm |

| Hydraulic System | |
|-------------------|-------|
| Working Pressure | 18MPa |
| Boom Lifting Time | 5.7s |
| Total Cycle Time | 10.6s |

| Brake System | |
|---------------|---------------------------------------|
| Service Brake | Air over hydraulic caliper disc brake |
| Park Brake | Air-cut brake |

| Service Refill Capacity | |
|-------------------------|------|
| Fuel Tank | 320L |
| Hydraulic Tank | 210L |
| Engine Oil | 20L |



LOVOL CONSTRUCTION MACHINERY GROUP CO., LTD.

Address: No. 75, Huanghe East Road, Huangdao District, Qingdao City, Shandong Province, China.

Website: en.lovol.com

Alibaba: lovolconstruction.en.alibaba.com

Facebook: Cons Lovol

E-mail: lovol_overseas@global.lovol.com

TEL: +86-532-86907190

As manufacturer, LOVOL has right to constantly upgrade and improve our products without informing to customers. The pictures in literatures are for reference only, the detailed specifications are subject to real products.

Engine Model

WEICHAI WD10G220E21

Rated Power

162kW

Operating Weight

17100kg

Bucket Capacity

3.3m³

Max. Breakout Force

165kN

FL958H

WHEEL LOADER



PRODUCTIVITY

- 5.5T wheel loader equipped with 3.3m³ standard bucket, high-efficiency power train system is perfectly matched with hydraulic multi-stage power system that makes machine work fast and efficient.
- The proven linkage structure is very efficient which has big breakout force, quick movement and high lifting capacity features.
- Low-effort joystick control system delivers high-efficiency operation with ease and fast.

ROBUSTNESS

- Reinforced center-articulated frame which has passed million times fatigue experimental test, 1,000 hours intensive experimental test and 5,000 hours jobsite test, it has been proved to be robust and durable.
- Bucket use JF440 steel which are joint-invented with renowned steel factory, it is more robust and wearable.
- The key components of axles are reinforced which could extend service time of whole axles and makes it more suitable for heavy-duty applications.

RELIABILITY

- The H series features many components which leverage product designs that have delivered reliable and durable machines.
- Adopt world class engine which provides excellent service and part availability in market.
- Optimized layout of pipelines and dual-seal technology can avoid oil leakage and make hydraulic system more reliable.

COMFORT

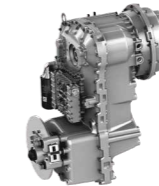
- LOVOL ETX (European Technology Excellent) cab adopts skeleton structure which has great vision, solid frame and lower noise features, these could provide a comfortable working environment for operator.
- High-back mechanical suspension seat with headrest could make operator feel more comfortable.

01 Engine



- Standard equipped with WEICHAI WD10G220E21 engine which is specialize for the heavy-dust working environment, it adopts three-stage air filter which can avoid early wear out of engine to extend service life. It also adopts multi-stage fuel filter which is suitable for various fuel to ensure the cleanliness of engine system.

02 Transmission



- The transmission adopts Germany ZF 4WG200 gearbox, it is durable and reliable that can provide long service time.
- Using electronic control shift technology, the operating lever has KD function to realize efficient switching between the second gear and first gear.

03 Axles



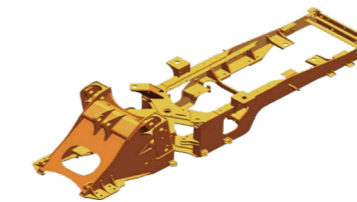
- Axle housing is optimized design through increasing the cross-section, the brace bearing of wheel hub is also reinforced, that make front axles capacity reaches 40T.
- Main reducer and wheel hub are reinforced, the service lives rise 30%.

04 Cab



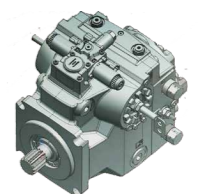
- Integrated closed skeleton structure cab which has great vision, equipped with air conditioning and high-back mechanical suspension seat, that make operator more comfortable
- The cab has micro pressurizing air system that makes the environment cleaner and comfortable.

05 Frame and Articulation



- New reinforced front and rear frames with patented composite articulated structure went through million times fatigue experimental test, 1,000 hours intensive experimental test and 5,000 hours jobsite test, reach super strong payload capacity.

06 Hydraulic System



- The hydraulic system is fix & variable system and the steering pump is piston pump with high bearing pressure and high reliability features.
- Hydraulic oil filter's filtration ratio is 200 (means 99.5% impurities could be filtered out), that makes hydraulic system cleaner and more reliable.

Attachments



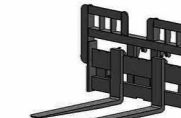
Larger Bucket



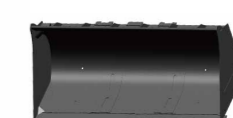
Log Grapple



Rock Bucket



Pallet Fork



Coal Bucket



Side-dump Bucket