

## TECHNICAL SPECIFICATIONS



### Engine

Engine Model	ISUZU BB-4BG1TRP
Number of Cylinders	4
Max. Torque/Speed	337.6N·m/1600rpm
Displacement	4.392L



### Hydraulic system

Max. Main Pump Flow	246.4L/min
Main Safety Valve Pressure	31.4/34.3MPa



### Main Performance

Bucket Digging Force	93.2kN
Arm Digging Force	69kN
Max. Traction Force	112kN
Max. Walking Speed	5.4km/h
Min. Walking Speed	3.2km/h
Rotary Speed	11.5r/min
Gradeability	35°
Ground Pressure	43kPa



### Oil Capacity

Fuel Tank	246L
Hydraulic Tank	160L
Engine Oil	13L



### LOVOL CONSTRUCTION MACHINERY GROUP CO., LTD.

Address: No. 75, Huanghe East Road, Huangdao District, Qingdao City, Shandong Province, China.

Website: [en.lovol.com](http://en.lovol.com)

Alibaba: [lovolconstruction.en.alibaba.com](http://lovolconstruction.en.alibaba.com)

Facebook: Cons Lovol

E-mail: [lovol\\_overseas@global.lovol.com](mailto:lovol_overseas@global.lovol.com)

TEL: +86-532-86907190

As manufacturer, LOVOL has right to constantly upgrade and improve our products without informing to customers. The pictures in literatures are for reference only, the detailed specifications are subject to real products.



Rated Power

**72.7kW/2200rpm**

Operating Weight

**13850kg**

Bucket Capacity

**0.53m³**

# FR150D

EXCAVATOR



## ENERGY-SAVING

### Low Fuel-Consumption Engine

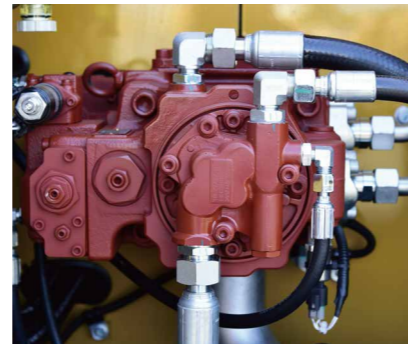
Equipped with original ISUZU turbo-charged engine which is imported from Japan features low engine speed, large torque, low fuel consumption and high performance, saving fuel dramatically. Three stage air filtering and three stage fuel filtering system provide multiple protections to engine.

### Optimal Hydraulic System

On base of original Kawasaki hydraulic system, LOVOL Japan engineering center exclusively optimized the valve's spool in order to get better coordination and land grading ability. Negative flow control system which makes good match between engine and hydraulic includes four modes to match up to different application.

### Optimal Operating Mode

When using hydraulic hammer, mode-B will automatically adjust engine speed to fit working applications to optimize the fuel consumption.



## RELIABILITY

### Core Components

Relying on the R&D system of LOVOL Japan Engineering Center, LOVOL has established solid partnerships with world-renowned companies to continuously optimize and improve the quality and service life of our key components. Industry leading components are used on our machines including engine, pump, valve, motor, oil cylinder, controller and forth.

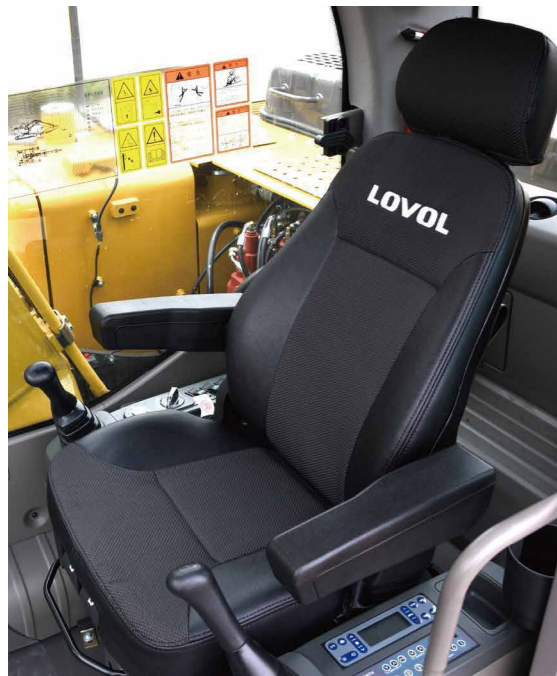
### Reinforced Structures

The advanced technology is utilized in stress analysis, which improves the reliability of structures dramatically. The front and rear support of boom are made of cast steel, which effectively reduces concentration of stress, key positions are also reinforced by welding strength plate, which makes arm more robust.

### Reliable Plugs

All the wiring harnesses adopt waterproof and dustproof connectors, which have high security level and high reliability.

## COMFORT



### Large Spacious Cab

Equipped with spacious cab which provides operator large space to operate machine. The premium suspension seat with armrests is very comfortable and it can reduce the working fatigue dramatically. Big LCD screen is easy to read all data and to operate when working. Air conditioning can provide comfortable feeling in cab.

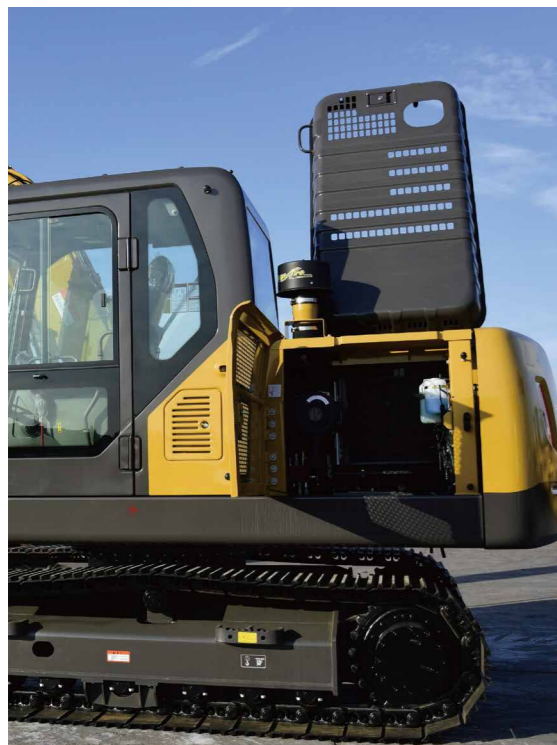
### Ergonomic Design

The proportional joystick delivers sensitivity, accuracy and smoothness during operation. This joystick is specially designed to meet different operating conditions. Intelligent control system is standard which could control diverse attachments such as bucket, hammer, scarifier and hydraulic scissors.

### Low Noise and Low Vibration

In order to reduce work fatigue and improve productivity, the noise inside of cab has been controlled to the lowest level. The cab is attached to the frame with buffer that dampens vibrations and sound levels to enhance operator comfort.

## SERVICEABILITY



### Engine Hood and Panels

The large engine hood enlarges maintenance space for operator to check and maintain the engine. The tool box is big with big opening angle which can put grease bucket and special tools easily. One key can open all locks of machine, it is very convenient for the operator.

### Electric and hydraulic parts

Pressure sensor is used on the main pump which can monitor hydraulic system's pressure when working. Centralized lubrication makes convenient and easy maintenance to slewing bearing, and the radiator is optimized for easy cleaning. These configurations make operator can maintenance machines easy and convenient.

### Filters and Maintenance Period

All the filters are fixed at ground level position, it is very convenient to do routine maintenance. The maintenance interval is also extended to save time and cost.

## INCREASE YOUR PRODUCTIVITY AND PROFIT WITH LOVOL ATTACHMENTS

You can easily expand the performance of your machine by utilizing any of the variety of LOVOL Attachments. Each LOVOL Attachments is designed to fit the weight and horsepower of LOVOL Excavator for improved performance, safety, and stability.



## STANDARD CONFIGURATION

### Engine

- Turbocharged 4 stroke water-cooling direct injection type
- Complying with China Stage II emissions
- Automatic idle system
- Engine oil pan drain valve
- Radiator with protective net
- Double filter elements dry air filter element
- Air pre-filter
- Air intake heater
- Fan guard

### Hydraulic System

- Automatic hydraulic system (confluence system)
- Anti-swing valve
- Movable arm and bucket rod block valve
- Multi-stage filtration system
- Cylinder buffer device
- Auxiliary hydraulic valve
- Automatic two-speed travel motor
- Slope anti-rotation device
- Waste oil discharge pipeline

### Electronic Control System

- 24V power supply
- Diagnostic interface
- Emergency stop switch
- Display brightness adjustment
- Maintenance tips
- Automatic diagnostic system
- Automatic idle system
- One-touch pressure augmentation
- Safe stop / start function
- Main power switch
- Anti-theft system
- Engine starting protection
- Multilingual display
- Top light of cab

### Cab

- Ashtray
- Cigar lighter
- Seat belt
- Front sunshade
- Console box
- Escape hammer
- Thermostatically controlled air conditioner
- Audio device
- Shock absorber (silicone oil and rubber pad)
- Flexible antenna
- Radio (with interfaces of MP3 and USB)
- Hydraulic safety lock
- Sun-protection safety glass
- Floor mat
- Large storage area
- Pull-up front window
- Removable lower windshield
- Sunshade window
- Wipers
- Open skylight

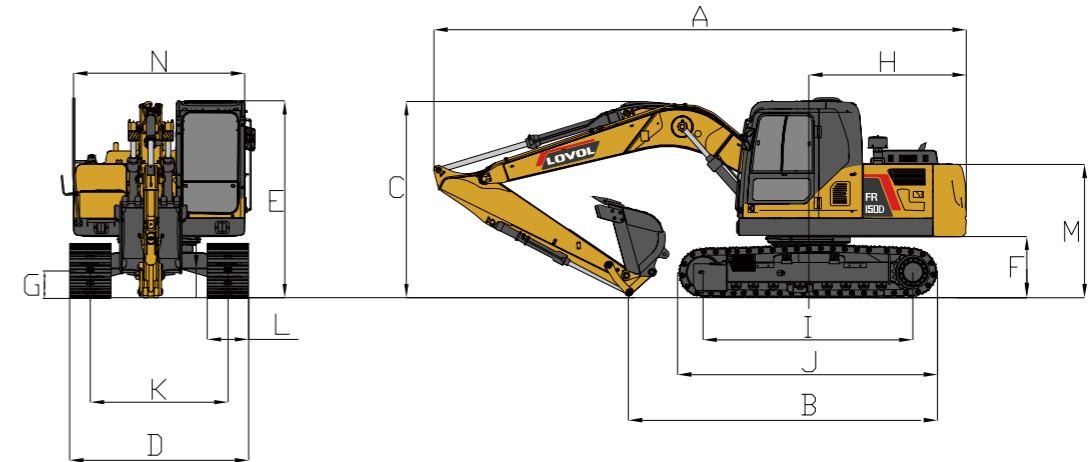
### Swing Platform

- Passage with railing
- Tool box
- Anti-skid plate
- Large pedal
- Large armrest
- Bottom protection plate

### Chassis

- Fixed chassis
- 500mm, three-tooth track shoe

## TECHNICAL SPECIFICATIONS

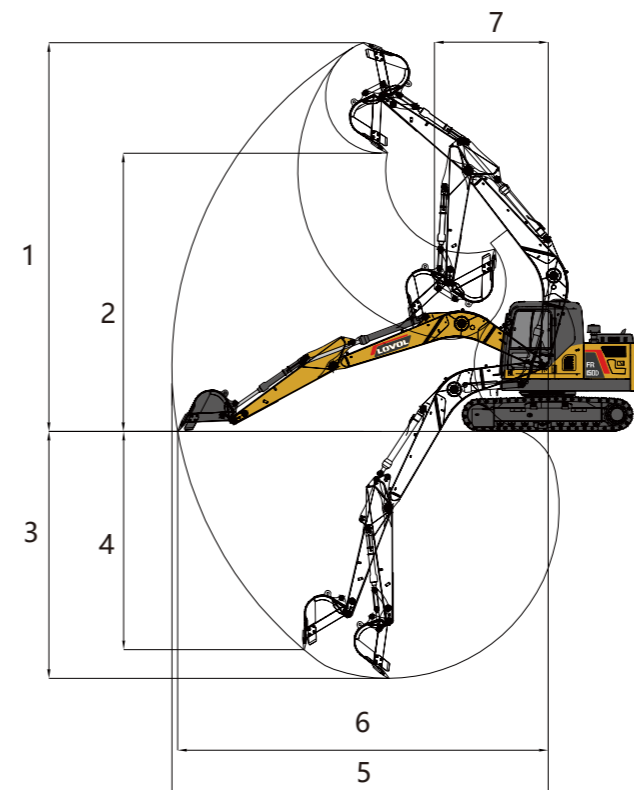


### Working Range

Max. Digging Height	1	8500mm
Max. Dumping Height	2	6080mm
Max. Digging Depth	3	5435mm
Max. Vertical Digging Depth	4	4825mm
Max. Digging Radius	5	8300mm
Max. Ground Digging Radius	6	8170mm
Min. Turning Radius	7	2490mm

### Dimensions

Shipping Length	A	7700mm
Shipping Ground Length	B	4395mm
Boom Height	C	2850mm
Shipping Width	D	2505mm
Cab Height	E	2850mm
Ground Clearance of Counter Weight	F	875mm
Min. Ground Clearance	G	420mm
Tail Turning Radius	H	2270mm
Length to Center of Rollers	I	2880mm
Track Length	J	3615mm
Track Gauge	K	2000mm
Track Shoe Width	L	500mm
Hood Height	M	1940mm
Rotary Platform Width	N	2490mm



### Other Specifications

Boom Length	4600mm
Arm Length	2500mm
Track Section Number (each side)	43
Track Roller Number	7