

FD160

LOVOL

BULLDOZER
SERIES

ENGINE MODEL	WEICHAI WD10G178E25
GROSS POWER	131KW(175HP)@1850rpm
OPERATING WEIGHT	17000KG



LOVOL CONSTRUCTION MACHINERY CO., LTD.

ADDRESS: No. 75, Huanghe East Road, Huangdao District, Qingdao City, Shandong Province, China.

TEL: +86-532-86907190

EMAIL: lovol_overseas@global.lovol.com WEB: en.lovol.com

FD160 TECHNICAL PARAMETERS

BULLDOZER SERIES

LOVOL

ENGINE	FD160	FD160C	FD160E	FD160F	FD160L	FD160R
Engine	WEICHAI WD10G178E25		SHANGCHAI SC11CB184G2B1			
Emission	China-II		China-II			
Rated revolution	1850rpm		1850rpm			
Gross power	131kW(175hp)@1850rpm		131kW(175hp)@1850rpm			
Net power	121kW(160hp)@1850rpm		121kW(160hp)@1850rpm			
Number of cylinder-bore×stroke	6-126X130mm		6-121X152mm			
Displacement	9.726L		10.5L			
Max. torque	830N.m@1100-1200rpm		843N.m@1300rpm			
Cooling system	Mechanic fan		Mechanic fan			

DRIVE SYSTEM	FD160	FD160C	FD160E	FD160F	FD160L	FD160R
Drive system	Manufactured by LOVOL, with high working efficiency, low breakdown rate; torque transmission, 3 gears forward and 3 gears backward.					
Traveling speed	Forward	0~3.29km/h, 0~5.82km/h, 0~9.63km/h				
	Backward	0~4.28km/h, 0~7.59km/h, 0~12.53km/h				
Torque converter	3-element, single stage, 1-phase					
Transmission	Planetary gear and torque transmission hydraulically actuated, forced lubrication					
Bevel gear shaft	Spiral bevel gear, single-stage speed reduction, splash lubrication					
Steering clutch	Wet multiple disc, disc spring loaded, hydraulically actuated, hand operated, interconnected with steering brake.					
Brake	Wet, contracting band, foot operated with hydraulic booster					
Final drive	Spur gear, double reduction, splash lubrication					

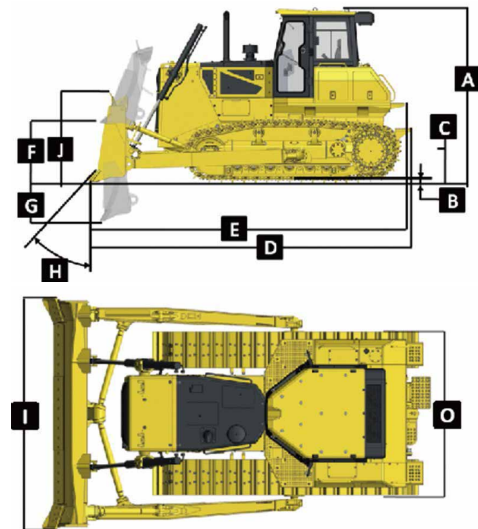
CHASSIS SYSTEM	FD160	FD160C	FD160E	FD160F	FD160L	FD160R
Type	Swing type of sprayed beam, suspended structure of equalizer bar					
Track shoe type	Single grouser			Wetland type		
Track gauge	1880mm			2300mm		
Width of track shoe	510/560/610mm	610mm	560mm	560mm	1100/950mm	1100/660mm
Track grounding length	2430mm		2365mm		2935mm	
Track grounding area	24786cm ²	29646cm ²	29512cm ²	29512cm ²	64570cm ²	
Number of track shoe	37pcs/side		39pcs/side		42pcs/side	
Grounding pressure (standard configuration)	58kPa	59.2kPa	55kPa	55kPa	25kPa	25kPa
Number of carrier roller	2 pcs/side					
Number of track roller	6pcs/side			7pcs/side		
Pitch	203mm					

VOLUME	FD160	FD160C	FD160E	FD160F	FD160L	FD160R
Fuel capacity	315L					
Coolant liquid capacity	62.8L					
Engine oil capacity	24L					
Hydraulic oil tank	112L					
Transmission	52L					
Drive axle	70L					
Final drive	21L/side			25L/side		

OPERATING WEIGHT	FD160	FD160C	FD160E	FD160F	FD160L	FD160R
Operating weight (standard)	17000kg	17370kg	17346kg	17500kg	18460kg	18460kg

BLADE	FD160	FD160C	FD160E	FD160F	FD160L	FD160R
Blade type	Straight-tilt/U	Coal-U	Straight-tilt	Straight-tilt/Angle	Straight-tilt	Waste handling blade
Blade capacity	3.5/4.8m ³	6m ³	3.5m ³	3.5/3.2m ³	3m ³	8.3m ³

DIMENSION	FD160	FD160C	FD160E	FD160F	FD160L	FD160R
A Machine height (without ROPS)	3032mm				3074mm	
B Track grouser height	65mm				101.5mm	
C Ground clearance	400mm					
D Machine length (with draw bar)	5140mm	5427mm	5345mm	5350mm	5262mm	
F Max. lifting height of blade	1095mm				1005mm	
G Max. digging depth of blade	540mm				485mm	
H Digging angle of blade	55°±3°(deg.)					
I Blade width	3455/3556mm (Straight-tilt/U)	3900mm	3455mm	3455/4011mm (Straight-tilt/Angle)	4150mm	
	1149/1120mm (Straight-tilt/U)	1235mm	1149mm	1149/1040mm (Straight-tilt/Angle)	960mm	1590mm
J Blade height	1149/1120mm (Straight-tilt/U)		1235mm	1149mm	1040mm	960mm
O Width from end of left track shoe to end of right track shoe (standard)	2390mm	2490mm	2440mm	2440mm	3400mm	



PARAMETER OF RIPPER	
Type	Three-shank ripper
Weight	1631kg
Q Max. ripping depth	572mm
R Max. lifting height	592mm
S Ripper length (at deepest ripping)	1580mm
T Ripper width	2080mm
U Departure angle (at highest lifting)	32.1°
V Ripping width	1900mm
W Distance between ripper teeth	950mm

