

FD220

LOVOL

BULLDOZER SERIES

| | |
|------------------|-----------------------|
| ENGINE MODEL | CUMMINS NT855-C280S10 |
| GROSS POWER | 175KW(235HP)@1800rpm |
| OPERATING WEIGHT | 23450KG |



LOVOL CONSTRUCTION MACHINERY CO., LTD.

ADDRESS: No. 75, Huanghe East Road, Huangdao District, Qingdao City, Shandong Province, China.

TEL: +86-532-86907190

EMAIL: lovol_overseas@global.lovol.com WEB: en.lovol.com

FD220 TECHNICAL PARAMETERS

BULLDOZER SERIES

LOVOL

| ENGINE | FD220 | FD220C | FD220F | FD220D/E | FD220S | FD220R |
|--------------------------------|-----------------------|--------|--------|----------|--------|--------|
| Engine | Cummins NT855-C280S10 | | | | | |
| Emission | China-I | | | | | |
| Rated revolution | 1800rpm | | | | | |
| Gross power | 175kW(235hp)@1800rpm | | | | | |
| Net power | 162kW(220hp)@1800rpm | | | | | |
| Number of cylinder-bore×stroke | 6-140X152mm | | | | | |
| Displacement | 14.01L | | | | | |
| Max. torque | 1080N.m@1300rpm | | | | | |
| Cooling system | Mechanic fan | | | | | |

| DRIVE SYSTEM | FD220 | FD220C | FD220F | FD220D/E | FD220S | FD220R |
|---------------------------------|---|-----------------------------------|--------|----------|--------|--------|
| Drive system | Manufactured by LOVOL, with high working efficiency, low breakdown rate; torqflow transmission, 3 gears forward and 3 gears backward. | | | | | |
| Traveling speed | Forward | F1:3.6km/h R2:6.5km/h F3:11.2km/h | | | | |
| | Backward | R1:4.3km/h R2:7.7km/h R3:13.2km/h | | | | |
| Max. theoretical traction force | 450kN | | | | | |
| Torque converter | 3-element, single stage, 1-phase | | | | | |
| Transmission | Planetary gear and torqflow transmission hydraulically actuated, forced lubrication | | | | | |
| Central drive | Spiral bevel gear, single-stage speed reduction, splash lubrication | | | | | |
| Steering clutch | Wet multiple disc, disc spring loaded, hydraulically actuated, hand operated, interconnected with steering brake. | | | | | |
| Brake clutch | Wet, contracting band, foot operated with hydraulic booster | | | | | |
| Final drive | Spur gear, double reduction, splash lubrication | | | | | |

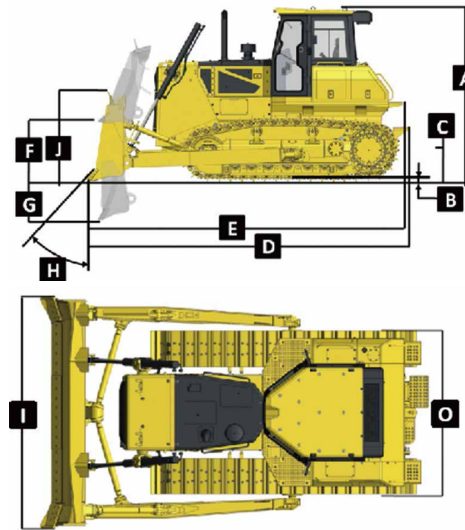
| CHASSIS SYSTEM | FD220 | FD220C | FD220F | FD220D/E | FD220S | FD220R |
|---|--|----------------------|----------------------|----------------------|--------------|---------|
| Type | Swing type of sprayed beam, suspended structure of equalizer bar | | | | | |
| Track shoe type | Single grouser | | | | Wetland type | |
| Track gauge | 2000mm | | | | 2250mm | |
| Width of track shoe | 560/610/660mm | 660mm | 610/660mm | 560/610/660mm | 910mm | |
| Track grounding length | 2430mm | | | 3050mm | 3480mm | |
| Track grounding area | 28727cm ² | 40935cm ² | 38317cm ² | 71476cm ² | | |
| Number of track shoe | 38pcs/side | | 41pcs/side | 45pcs/side | | |
| Grounding pressure (standard configuration) | 66kPa | 57.5kPa | 64kPa | 66kPa | 36kPa | 35.2kPa |
| Number of carrier roller | 2 pcs/side | | | | | |
| Number of track roller | 6pcs/side | | | 7pcs/side | 8pcs/side | |
| Pitch | 206mm | | | | | |

| VOLUME | FD220 | FD220C | FD220F | FD220D/E | FD220S | FD220R |
|-------------------------|----------|--------|--------|-----------|--------|--------|
| Fuel capacity | 450L | | | | | |
| Coolant liquid capacity | 79L | | | | | |
| Engine oil capacity | 45L | | | | | |
| Transmission | 122L | | | | | |
| Drive axle | 110L | | | | | |
| Final drive | 82L/side | | | 102L/side | | |

| OPERATING WEIGHT | FD220 | FD220C | FD220F | FD220D/E | FD220S | FD220R |
|-----------------------------|---------|---------|---------|----------|---------|---------|
| Operating weight (standard) | 23450kg | 24000kg | 24700kg | 24600kg | 25700kg | 26000kg |

| BLADE | FD220C | FD220 | FD220F | FD220D/E | FD220S | FD220R |
|----------------|-----------------|-------------------------------|--------|----------|-------------------|--------------------|
| Blade type | Coal-U | Straight-tilt/Angle/Semi-U/U | | | Straight-tilt | Waste handling |
| Blade capacity | 8m ³ | 4.6/3.4/5.8/6.7m ³ | | | 5.2m ³ | 11.8m ³ |

| DIMENSION | FD220 | FD220C | FD220F | FD220D/E | FD220S | FD220R |
|-------------------------------------|---|-----------------------|--------|----------|----------------------|--------|
| A Machine height (without ROPS) | 3402mm | | | | | |
| B Track grouser height | 72mm | | | | 123mm (Wetland type) | |
| C Ground clearance | 405mm | | | | 513mm | |
| D Machine length (without draw bar) | 6027mm | 5462mm | | 5712mm | 6257mm | |
| E Machine length (with draw bar) | 6060mm | 5495mm | | 6290mm | | |
| F Max. lifting height of blade | 1210mm | | | | 1330mm | |
| G Max. digging depth of blade | 540mm | | | | 550mm | |
| H Digging angle of blade | 55°±3°(deg.) | | | | | |
| I Blade width | 4200mm | 3725/4365/3800/3725mm | | | 4365mm | |
| J Blade height | 1350mm | 1315/1055/1343/1374mm | | 1248mm | 1885mm | |
| O | Width from end of left track shoe to end of right track shoe (standard) | | | | 3000mm | |



| PARAMETER OF RIPPER | Type | Three-shank ripper | Single shank ripper |
|--|------|--------------------|---------------------|
| Weight | | 2600kg | 2450kg |
| Q Max. ripping depth | | 666mm | 695mm |
| R Max. lifting height | | 555mm | 515mm |
| S Ripper length (at deepest ripping) | | 1781mm | 1974mm |
| T Ripper width | | 2158mm | 1426mm |
| U Departure angle (at highest lifting) | | 25.5° | 25.5° |
| V Ripping width | | 2000mm | 2000mm/106mm |
| W Distance between ripper teeth | | 930mm | - |

